

# BULKHEAD QUICK CONNECTORS - PS/PD SERIES - $\varnothing$ ¾" - 1" - 1½" - 2"



The bulkhead quick connectors are designed to allow air cannons to pass through the filter wall in a simple and rational way, without requiring welds or threaded connectors.

Turbo provides two ranges:

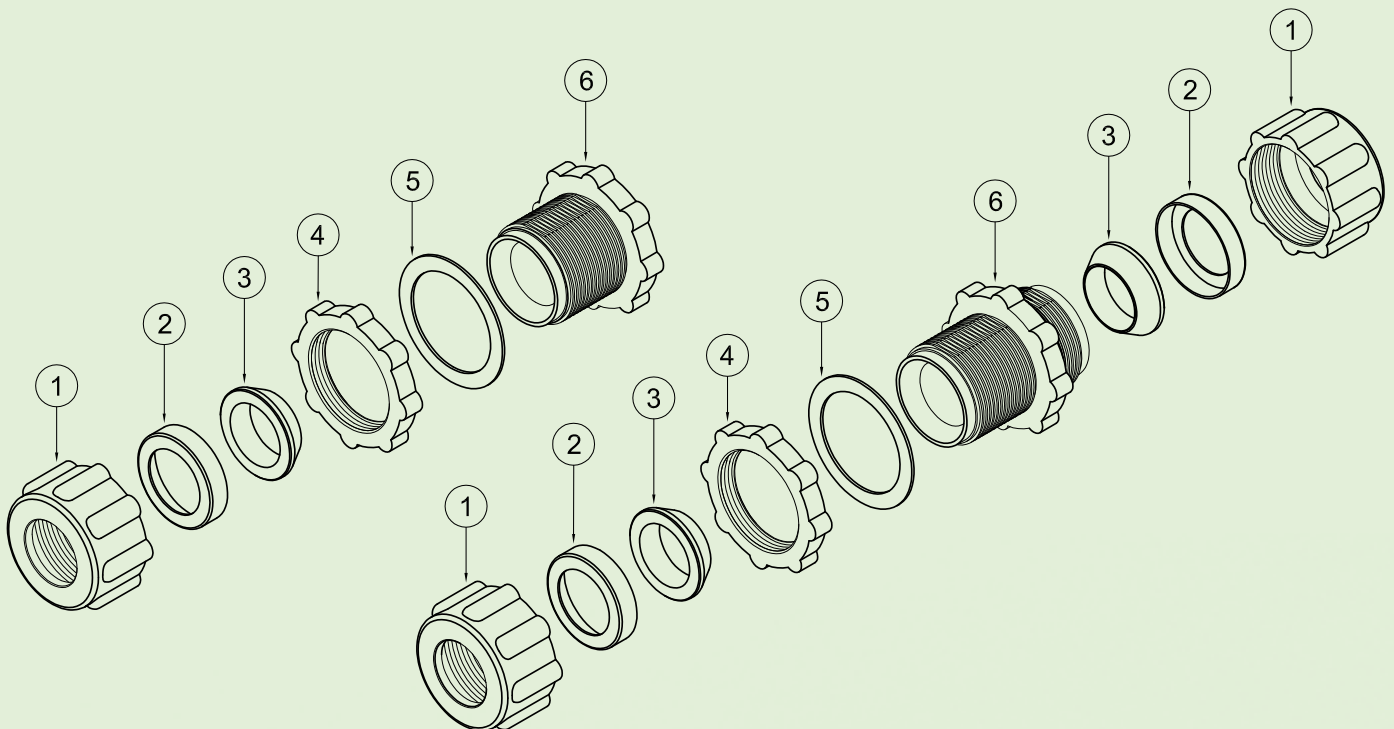
- PD series, used to connect two pipes
- PS series, used for the air cannon

Turbo also provides special keys for fastening nuts and lock nuts.

We recommend using them only in a pneumatic setting.

Do not use as a mechanical support.

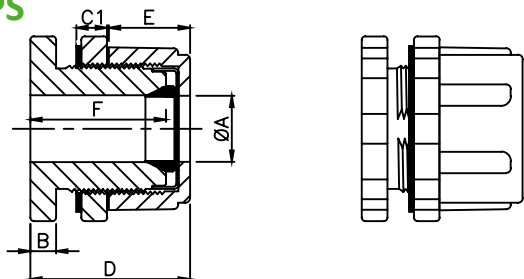
DESCRIPTION	PS20	PS25	PS40	PS55
1 Nut	1281040	1281045	1281050	1281055
2 Retaining ring	1321006	1321010	1321012	1321014
3 Conical seal	3301010	3301013	3301017	3301020
4 Lock nut	3181036	3181036	3181032	3181022
5 Fibre gasket	3141529	3141529	3581000	3581014
6 Body	1252022	1252026	1252032	1251052



DESCRIPTION	PD20	PD25	PD40	PD55
1 Nut	1281040	1281045	1281050	1281055
2 Retaining ring	1321006	1321010	1321012	1321014
3 Conical seal	3301010	3301013	3301017	3301020
4 Lock nut	3181036	3181036	3181032	3181022
5 Fibre gasket	3141529	3141529	3581000	3581014
6 Body	1252020	1252024	1252028	1252034

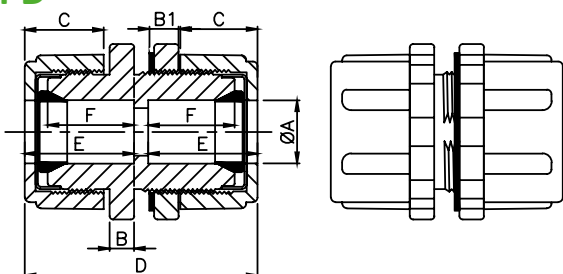
# PS/PD SERIES - $\phi$ 3/4" - 1" - 1 1/2" - 2" - OVERALL DIMENSIONS

## PS



MODEL	ØA	B	C1	D	E	F	Weight (kg)
PS 20	3/4"	10.5	12.5	67	35	56	0.5
PS 25	1"	10.5	12.5	67	35	56	0.4
PS 40	1 1/2"	15	16.5	92	40	79	0.8
PS 55	2"	15	16.5	91	42	80	1

## PD

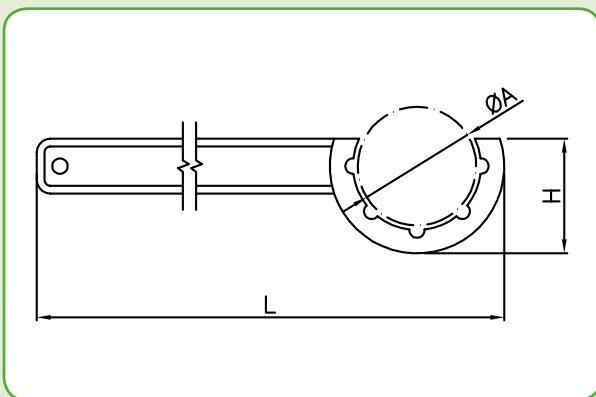
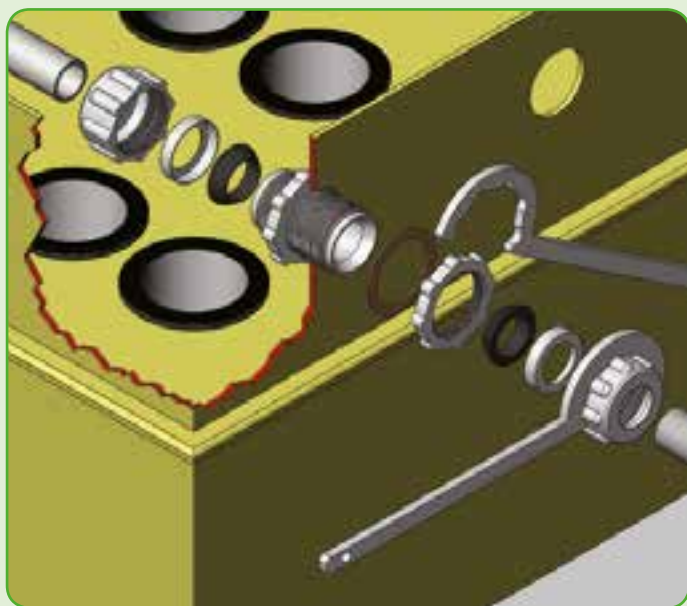


MODEL	ØA	B	B1	C	D	E	F	Weight (kg)
PD 20	3/4"	10.5	12.5	35	105	50	38	0.7
PD 25	1"	10.5	12.5	35	105	50	38	0.6
PD 40	1 1/2"	15	16.5	40	140	67	55	1.2
PD 55	2"	15	16.5	42	142	55	66	1.4

### TECHNICAL FEATURES

Body, lock nut, nuts	Die-cast aluminium	
Seals	NBR	-30°C / +100°C
	Silicone	-60°C / +200°C
Bulkhead connector assembly	3/4"	hole in wall min. diam.: 56
	1"	hole in wall min. diam.: 56
	1" 1/2	hole in wall min. diam.: 72
	2"	hole in wall min. diam.: 84

## MOUNTING KEYS - SG/SD SERIES



### NUT LOCKING KEY SD SERIES

MODEL	Ø	A	H	L
SD 20	3/4"	61	70	350
SD 25	1"	61	70	350
SD 40	1 1/2"	82	85	410
SD 55	2"	98	90	420

### LOCK NUT LOCKING KEY SG SERIES

MODEL	Ø	A	H	L
SG 20	3/4"	70	65	350
SG 25	1"	70	65	350
SG 40	1 1/2"	90	85	410
SG 55	2"	103	90	420